

Estratto da:

***“Rapporto sulla Spesa Farmaceutica anno 2008”
ambito ex A.S.n.7.***

***Analisi Piani Terapeutici AIFA pervenuti – elaborazione grafica dati rilevati
per diagnosi, sesso età, farmaco prescritto, centro prescrittore.***

A. Talarico – M.A. Genovesi – C. Rogato – I. La Salvia – V. Macrina
con la collaborazione degli specializzandi della Facoltà di Farmacia Università Magna Grecia

Per quanto riguarda le verifiche dei piani terapeutici si specifica quanto segue:

Il numero dei P.T. pervenuti all'U.O. Assistenza Farmaceutica dell'ex-ASn°7 di Catanzaro nell'anno 2008 è di circa **9.000**, la verifica innanzitutto è mirata a rilevare:

- ✓ Coerenza tra *indicazione terapeutica* inserita sul P.T. e *indicazione prevista da scheda tecnica* (A.I.C. Ministeriale);
- ✓ Coerenza tra *dosaggio* inserito sul P.T. e *dosaggio previsto da scheda tecnica* (A.I.C. Ministeriale);
- ✓ Dose Farmaco;
- ✓ Durata del trattamento.

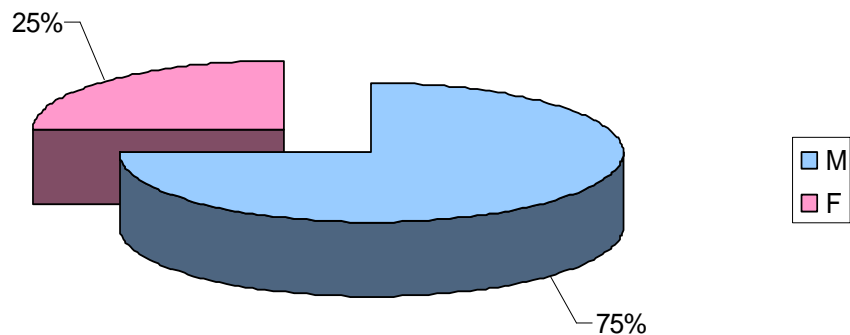
Per ciascun gruppo di farmaci con obbligo di P.T., sono stati elaborati dei grafici, da cui si evince il *numero totale* dei pazienti suddivisi *per età, per sesso e per diagnosi*; la *molecola* con cui sono stati trattati; quali sono i *Centri Prescrittori*.

In particolare sono stati studiati i seguenti gruppi di farmaci:

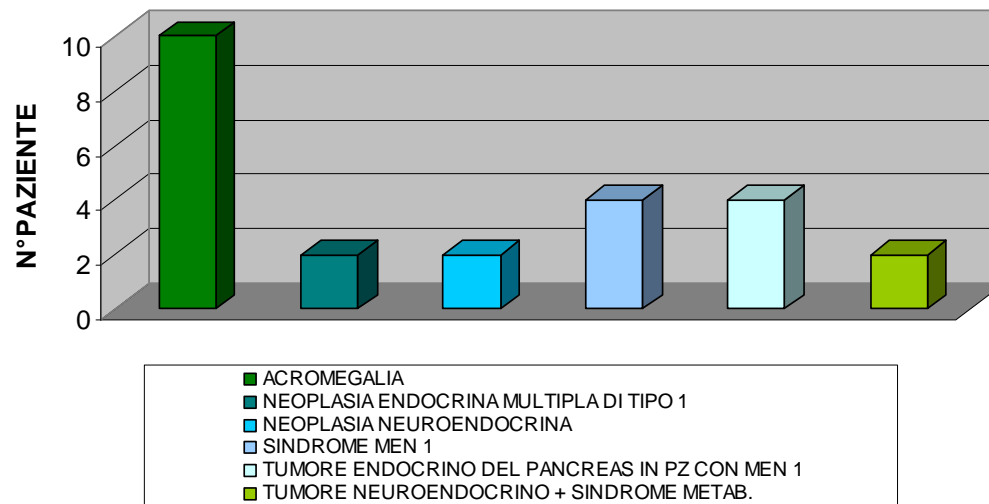
1. *Analoghi della Somatostatina* – Nota AIFA 40 (vedi **tab. 1**);
2. *Analoghi RH* – Nota AIFA 51(vedi **tab. 2**);
3. *Antipsicotici Atipici* (vedi **tab. 3**);
4. *Clopidogrel* – ex Nota AIFA 9 bis(vedi **tab. 4**);
5. *Eritropoietine* – Nota 12 (vedi **tab. 5**);
6. *Farmaci Antidiabetici* (vedi **tab. 6**);
7. *Farmaci per l'infertilità femminile e maschile* – Nota AIFA 74 (vedi **tab. 7**);
8. *Interferoni* – Nota AIFA 32 (vedi **tab. 8**);
9. *Ormone della Crescita GH* – Nota AIFA 39 (vedi **tab. 9**);
10. *Ossigeno Liquido* – Nota AIFA 58 (vedi **tab. 10**);
11. *Anti-alzheimer* – Nota AIFA 85 (vedi **tab. 11**);
12. *Teriparatide* – Nota AIFA 79 (vedi **tab. 12**);
13. *Fattore di crescita dei leucociti* – Nota AIFA 30 e 30/bis (vedi **tab. 13**);
14. *Farmaci Antiglaucoma* – Nota AIFA 78 (vedi **tab. 14**).

ANALOGHI DELLA SOMATOSTATINA

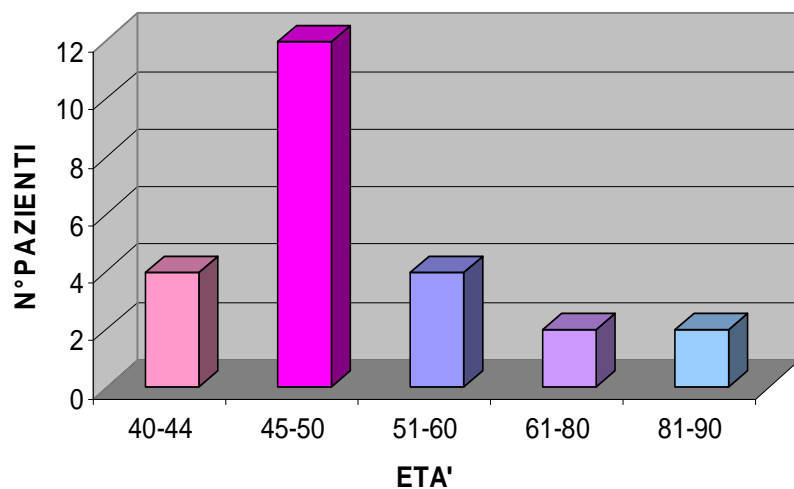
SUDDIVISIONE DEI PAZIENTI IN BASE AL SESSO



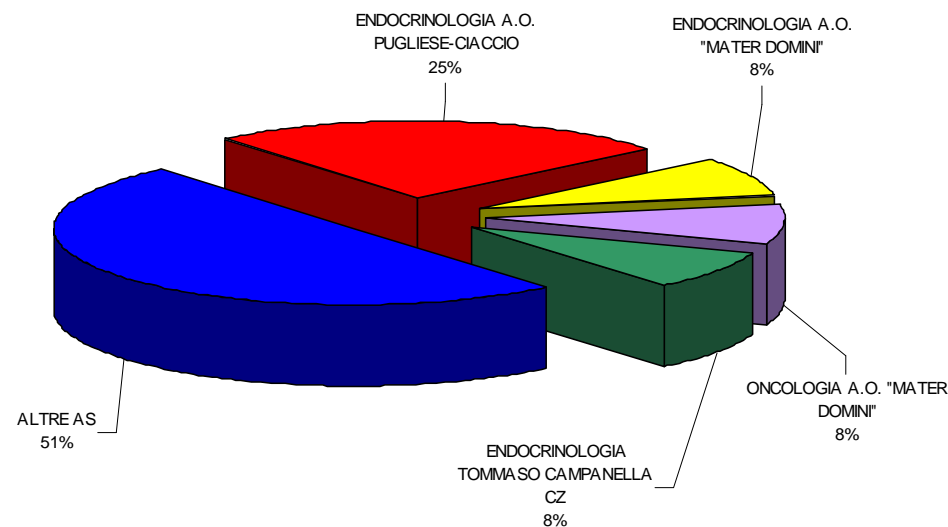
SUDDIVISIONE DEI PAZIENTI IN BASE ALLA DIAGNOSI



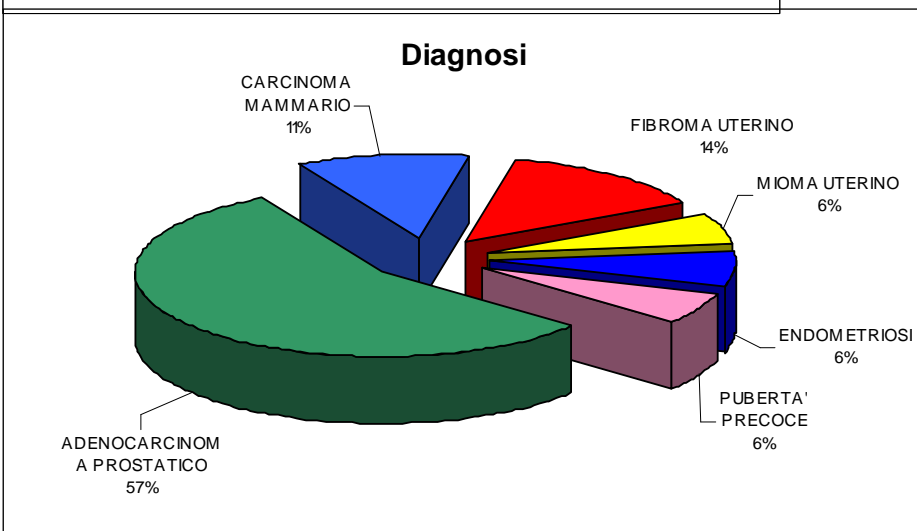
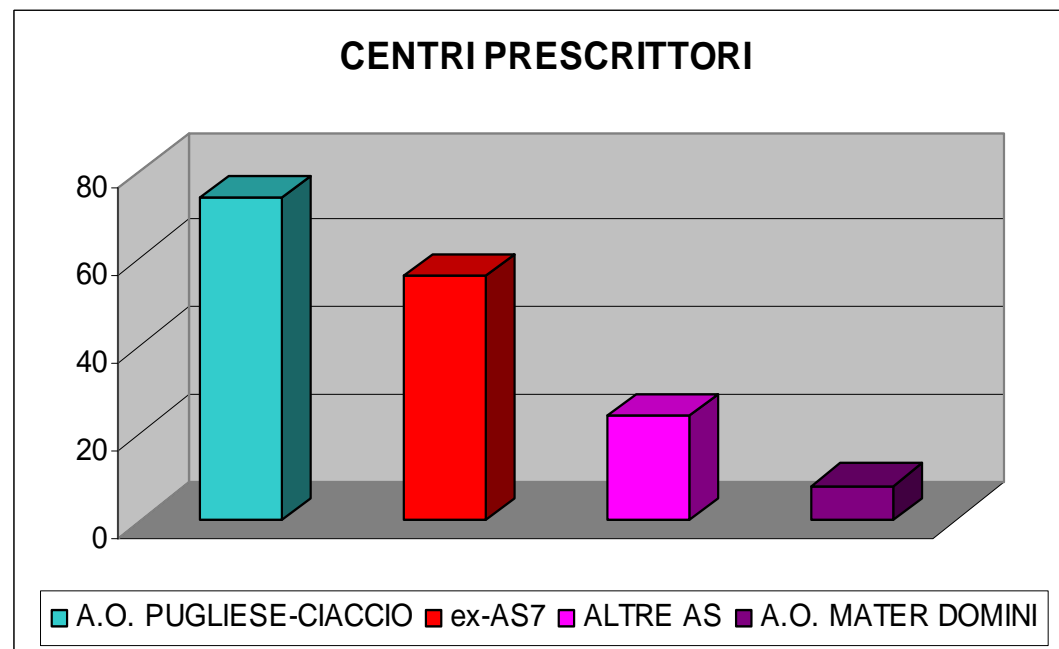
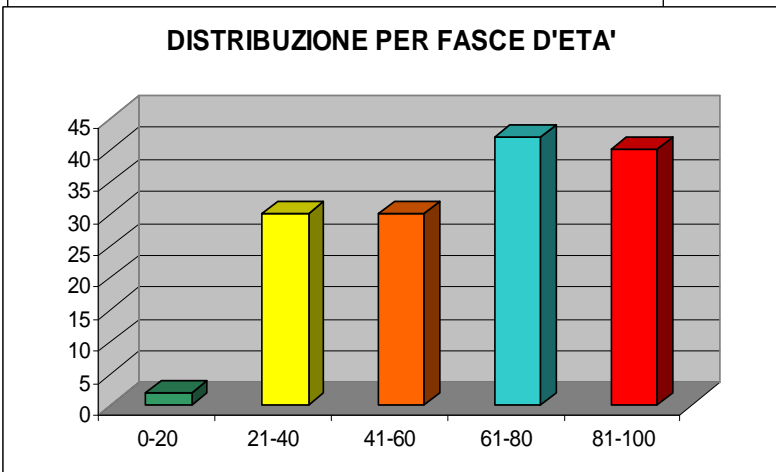
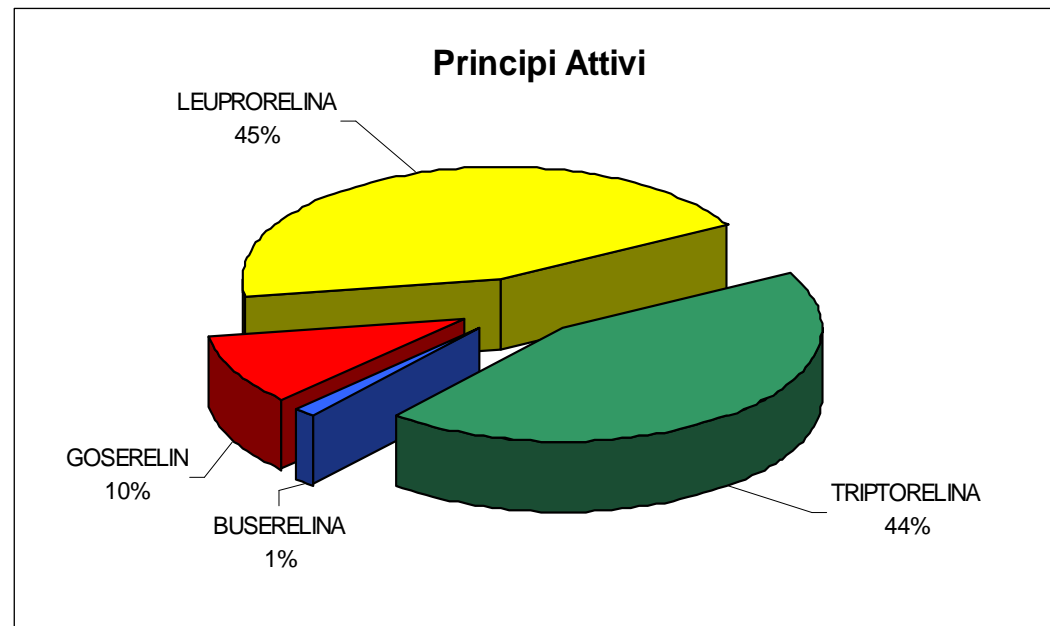
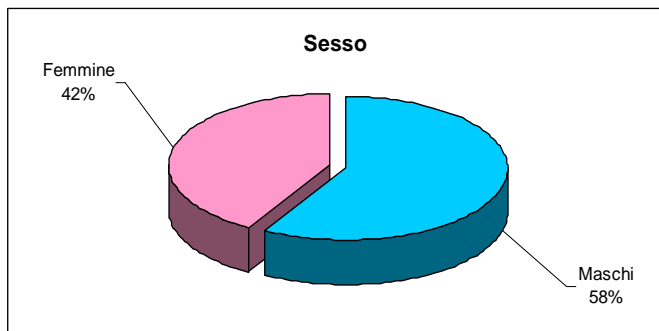
SUDDIVISIONE DEI PAZIENTI PER ETA'



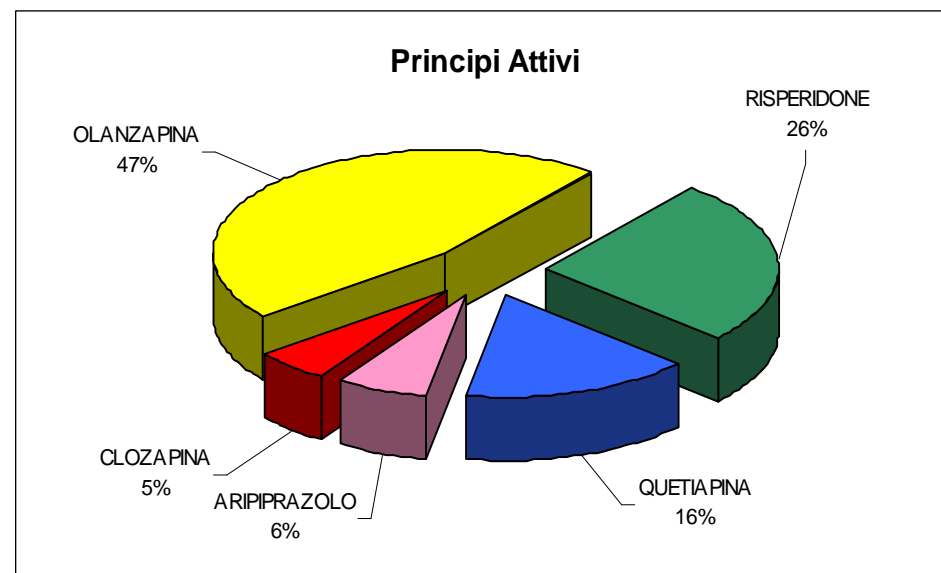
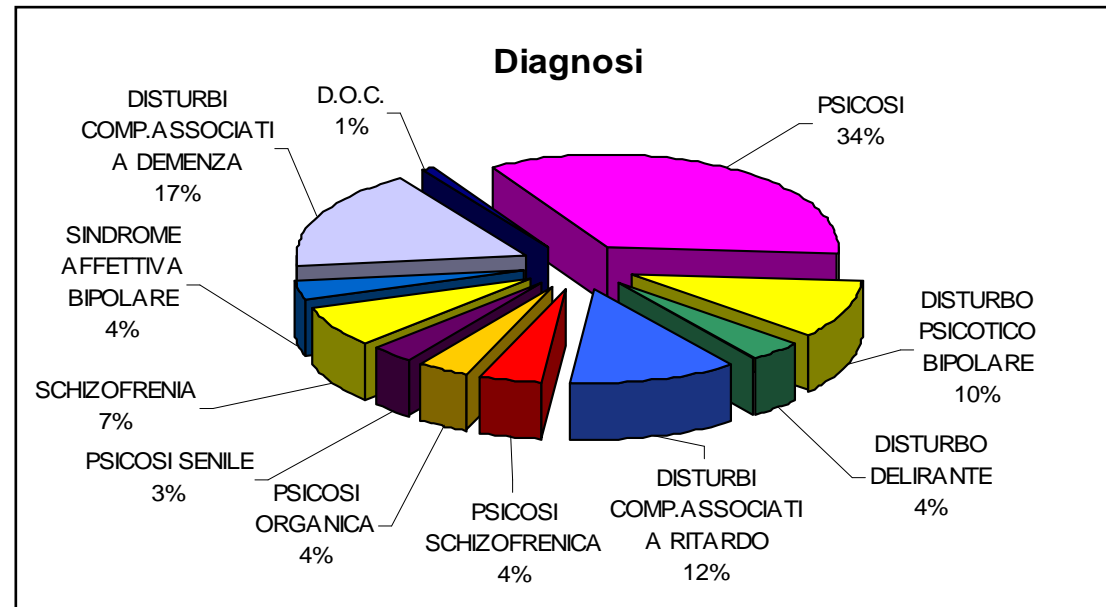
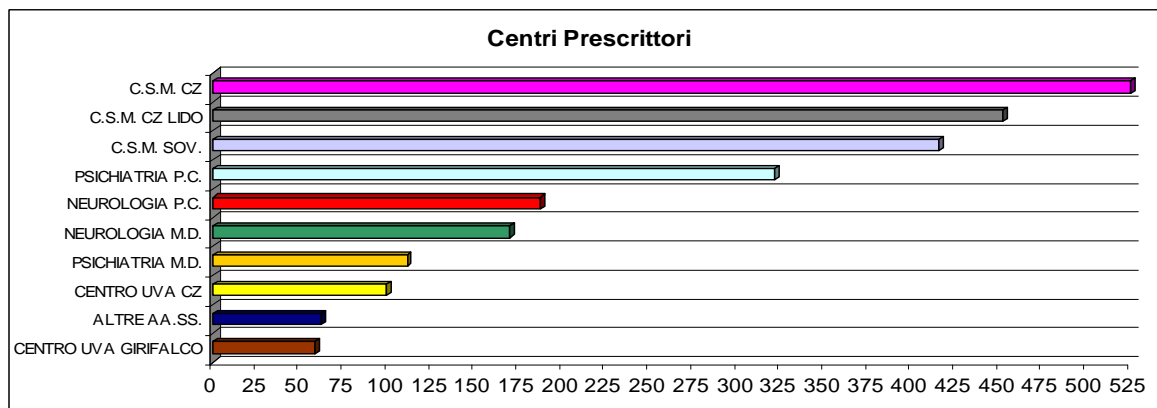
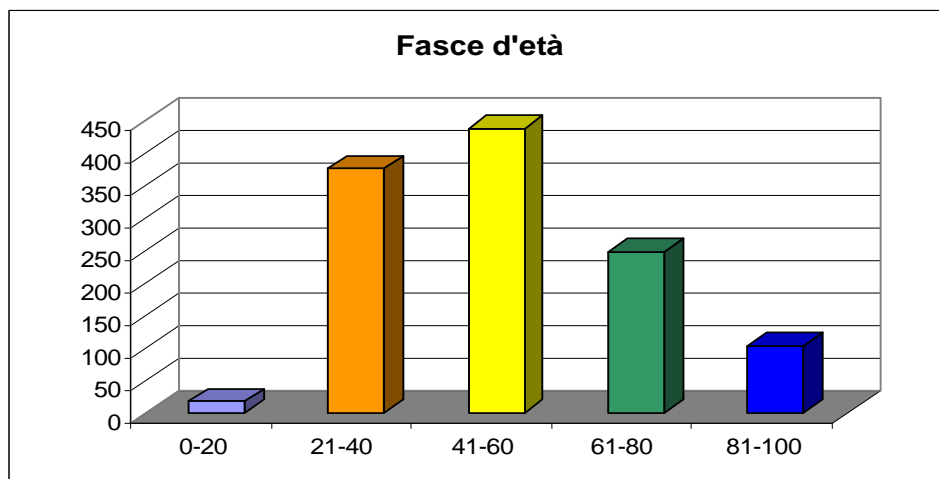
CENTRI PRESCRITTORI



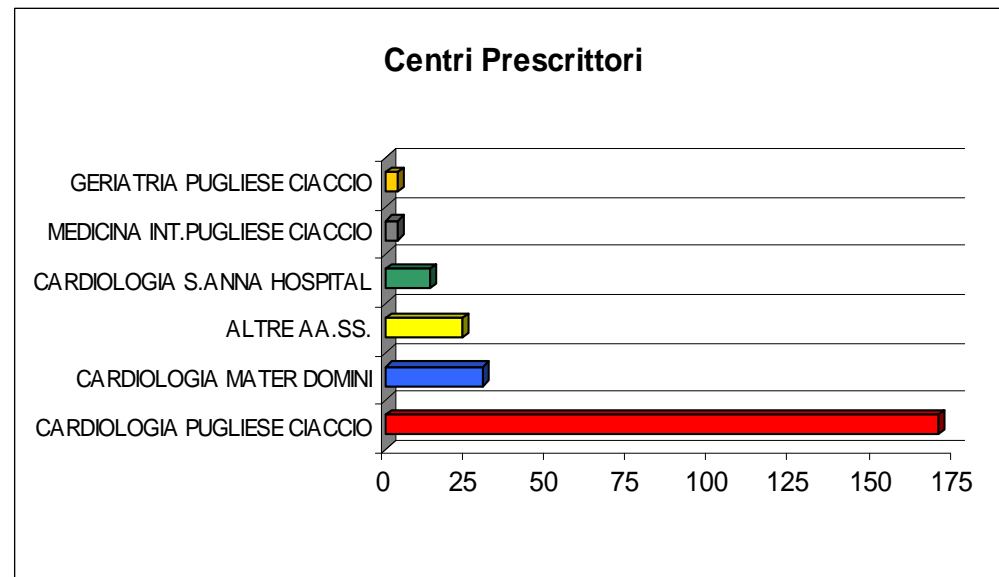
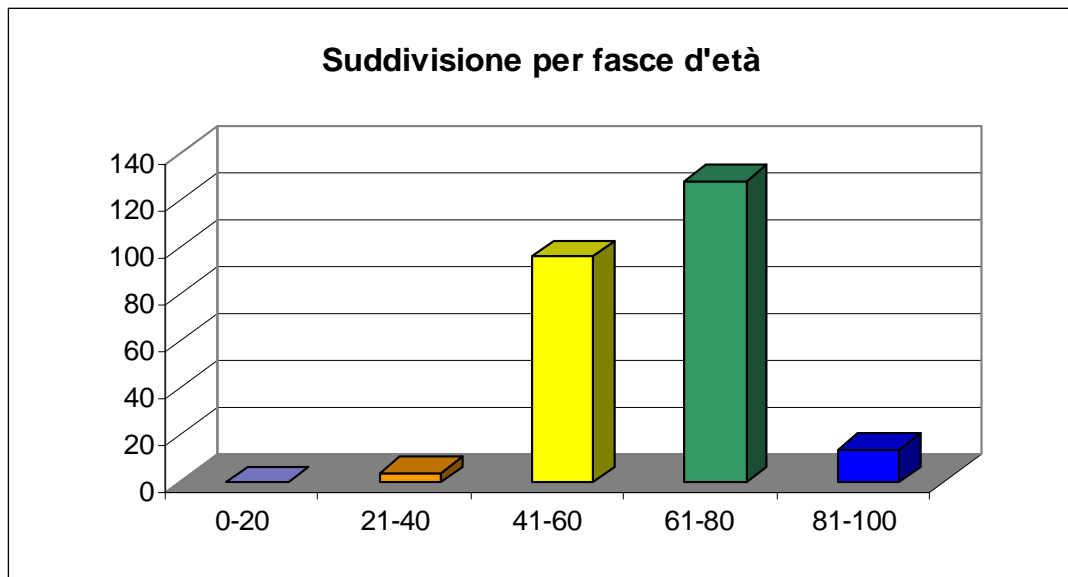
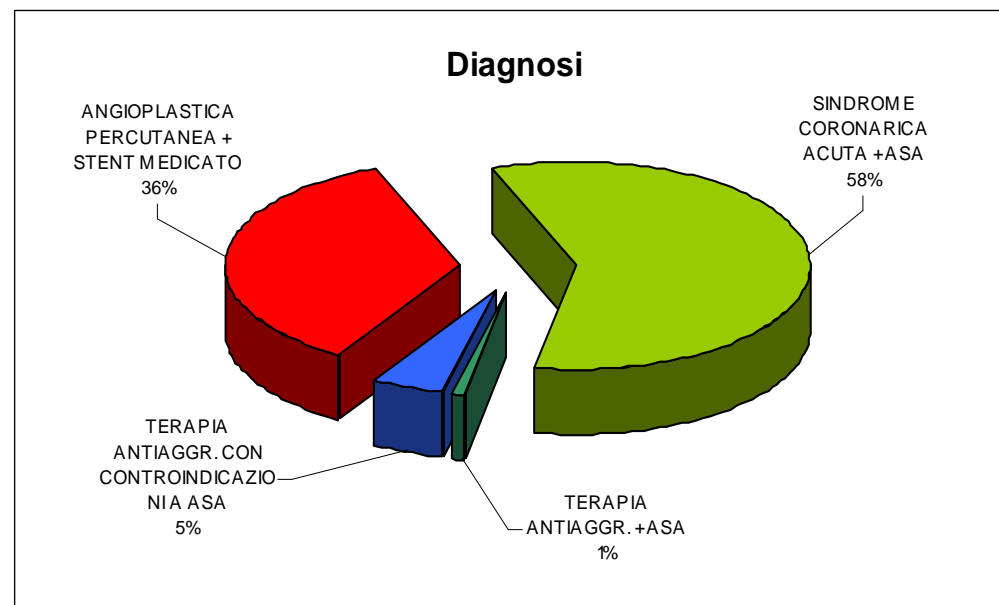
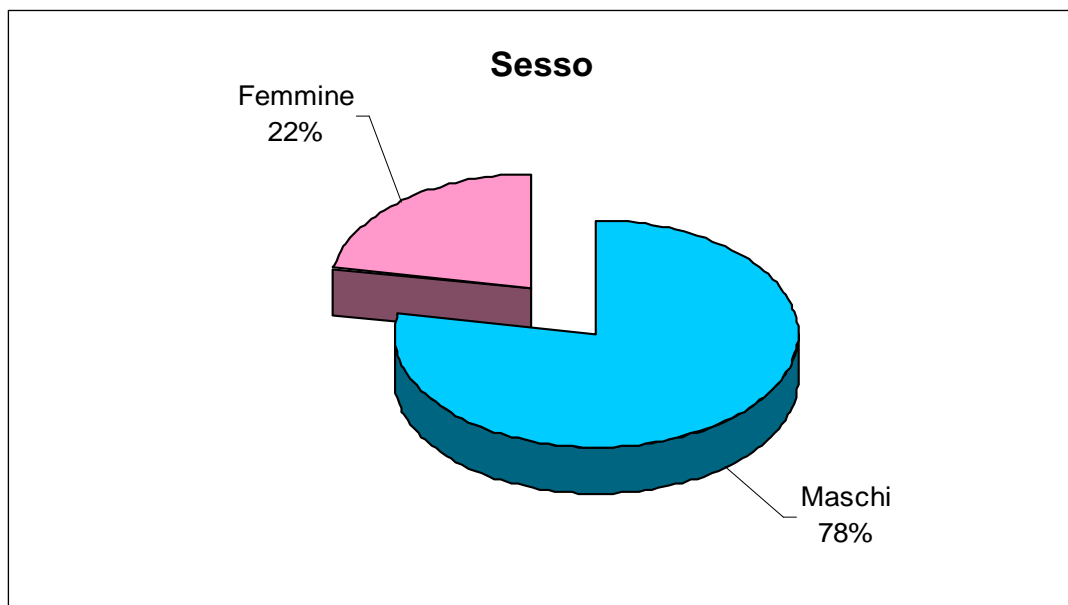
ANALOGHI R H



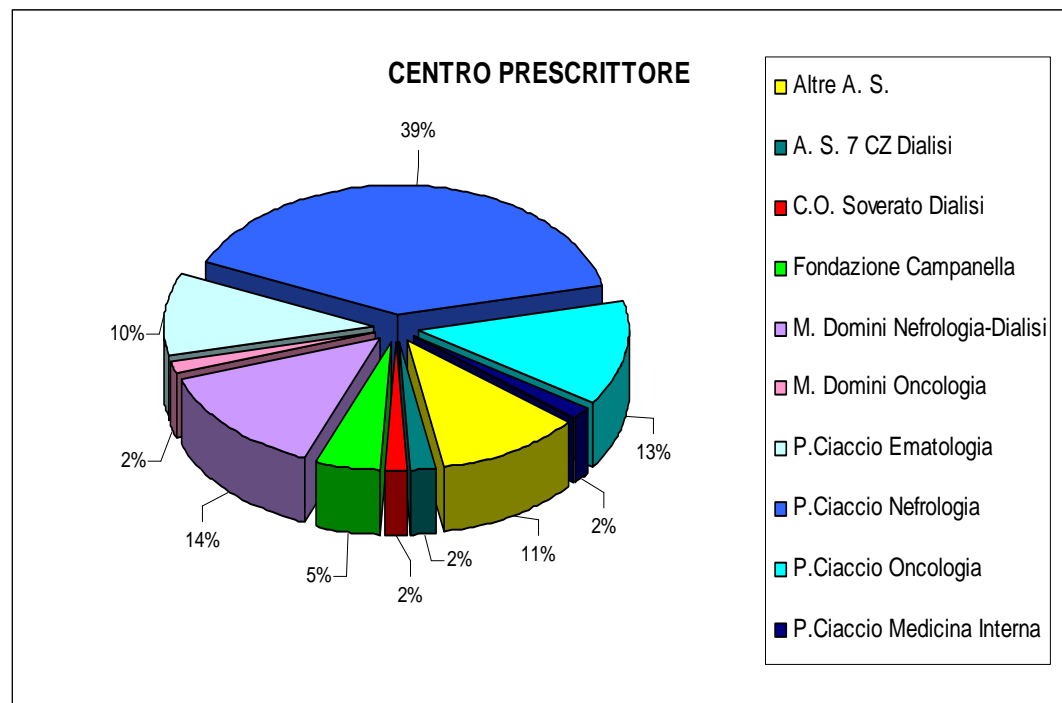
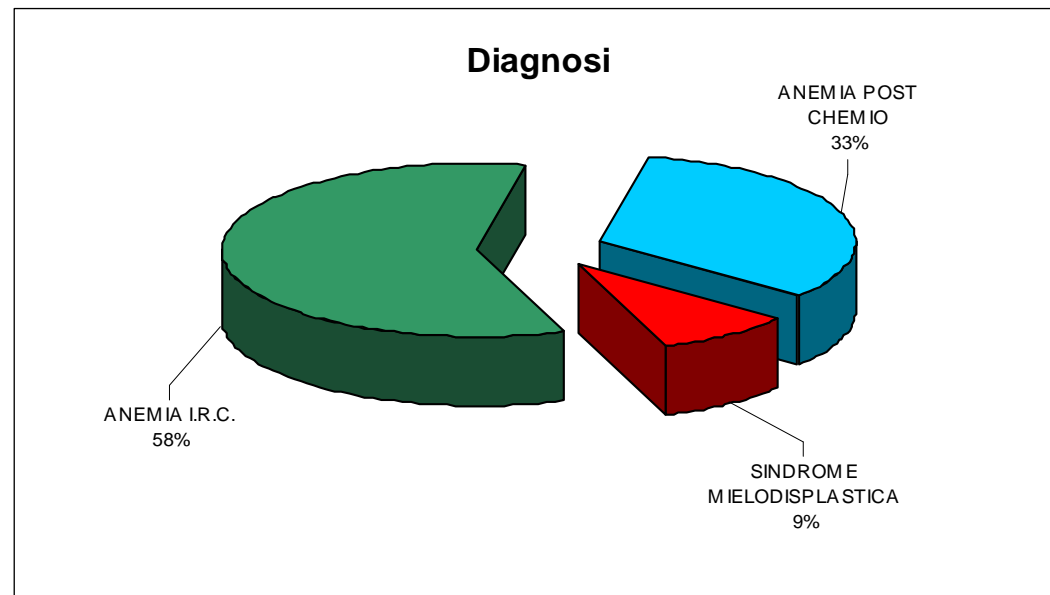
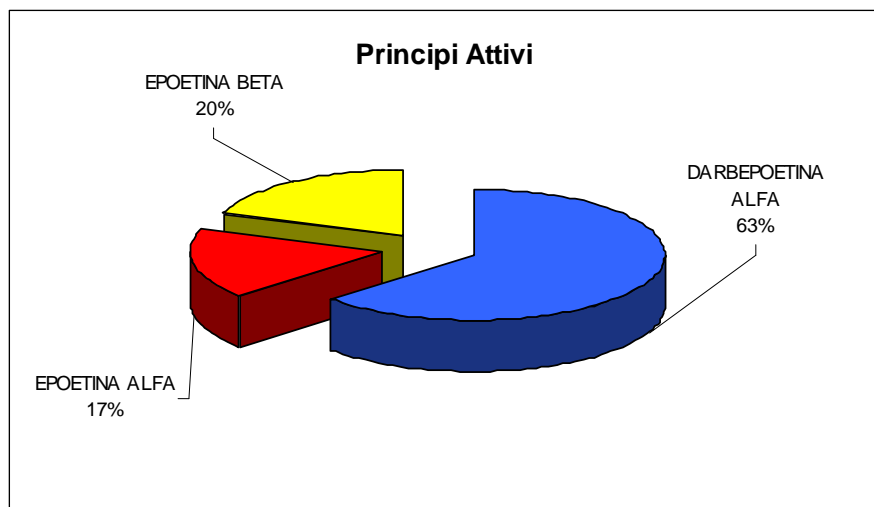
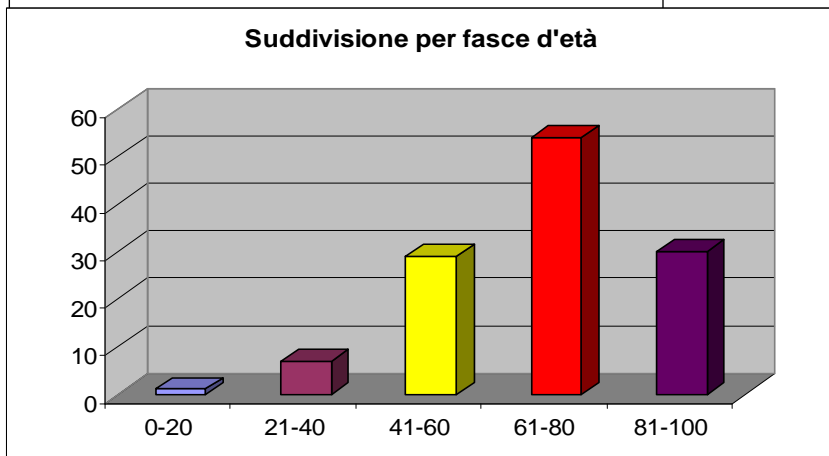
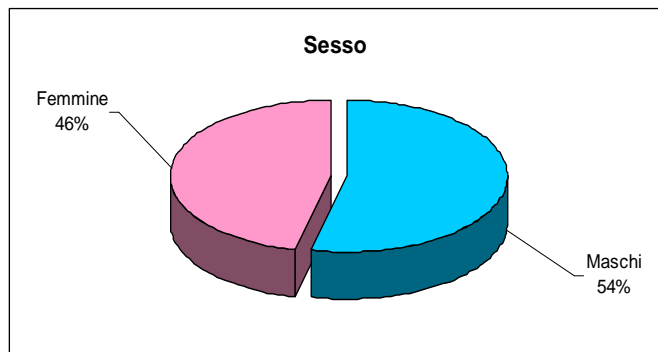
ANTIPSIKOTICI ATIPICI



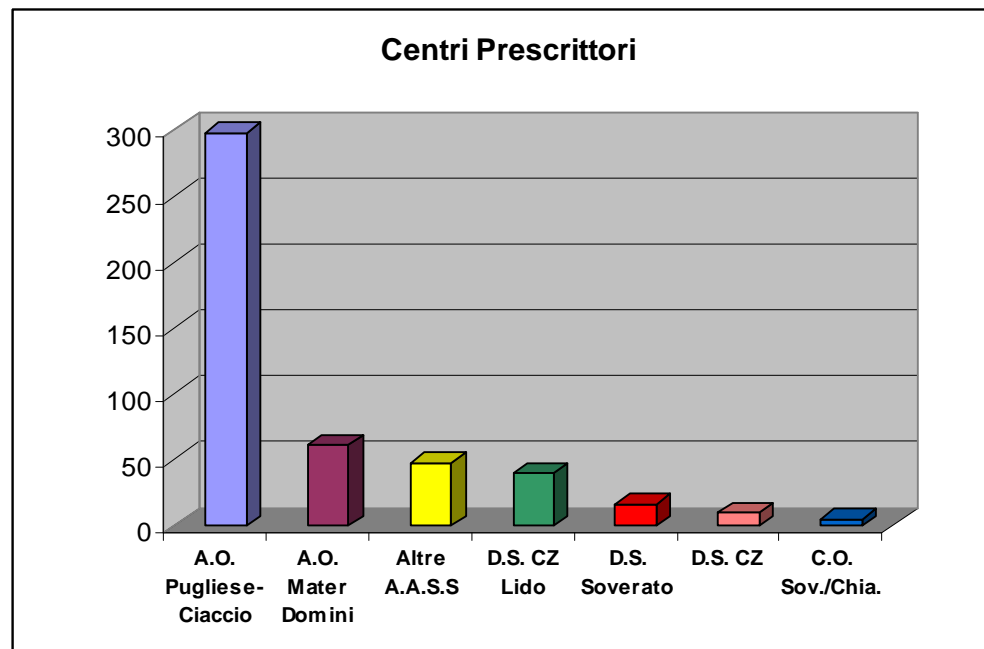
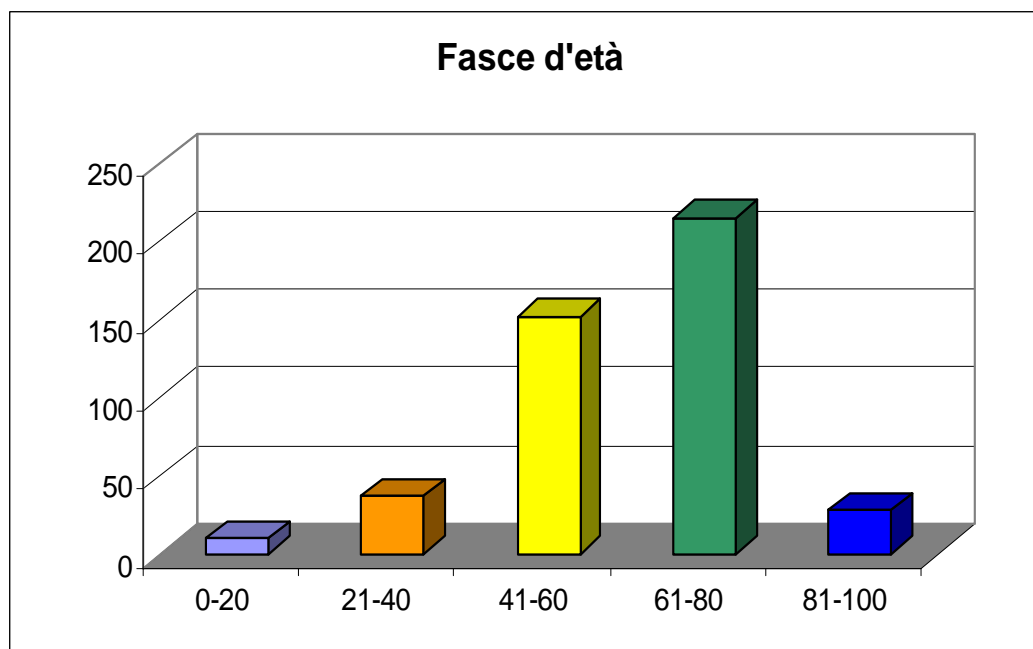
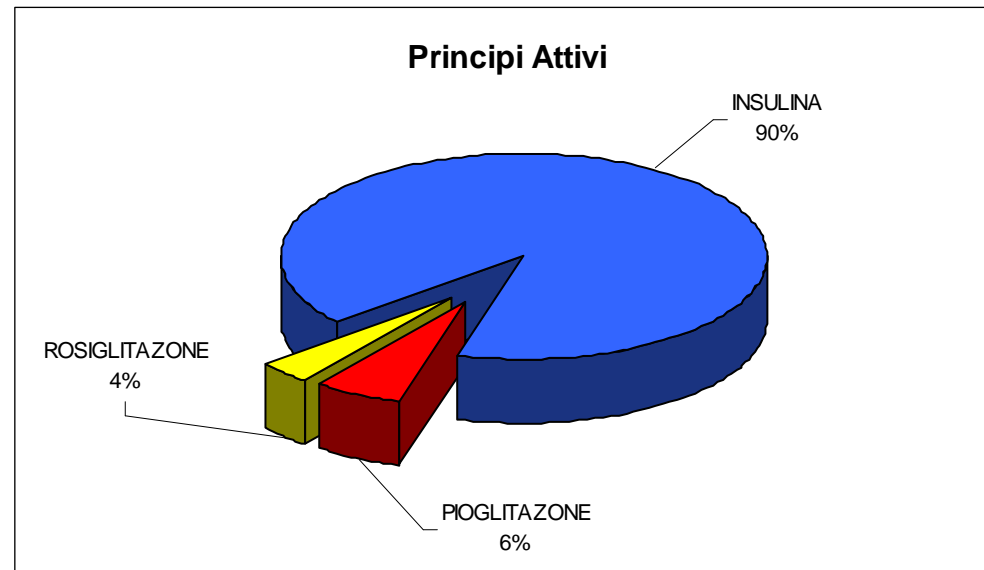
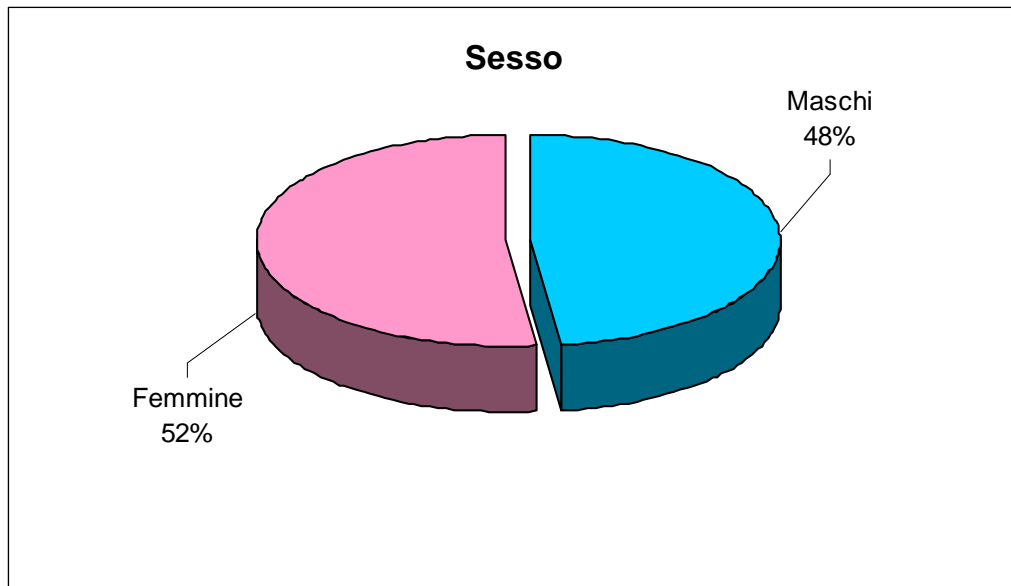
CLOPIDOGREL



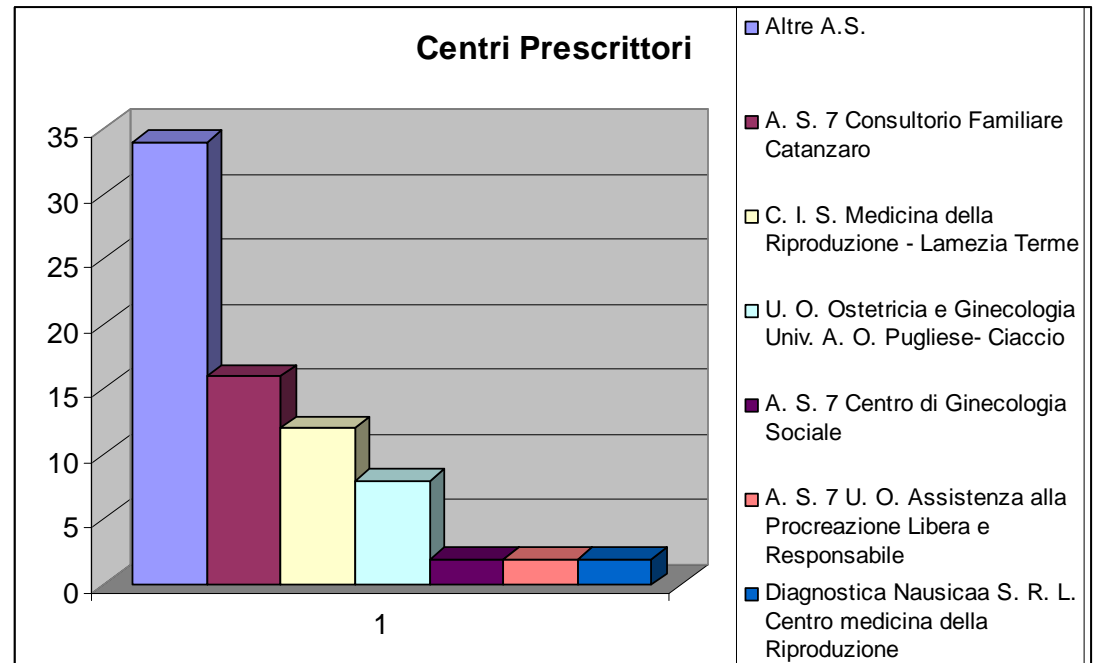
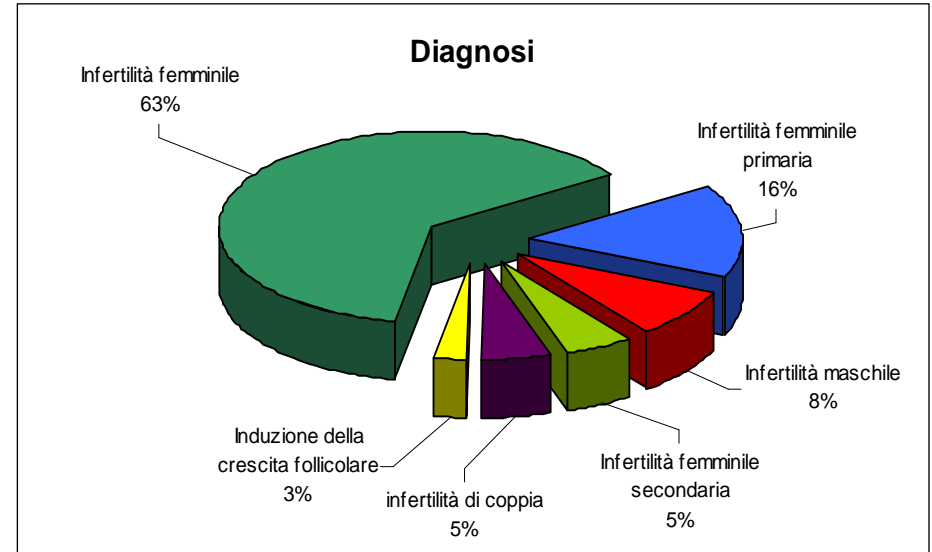
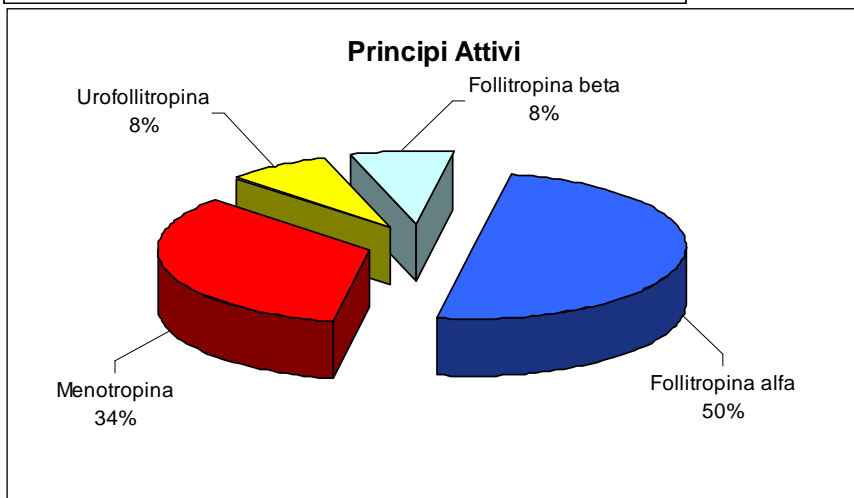
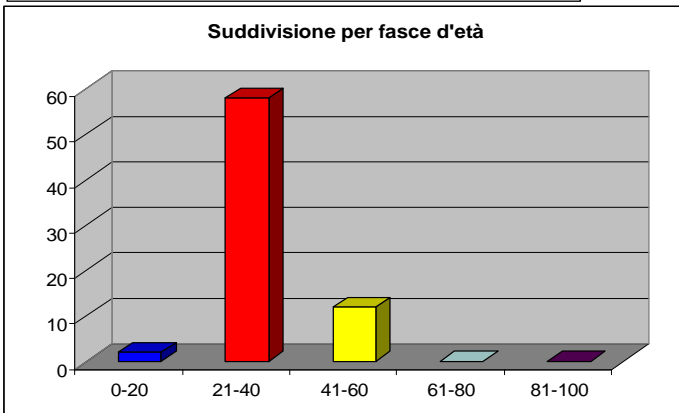
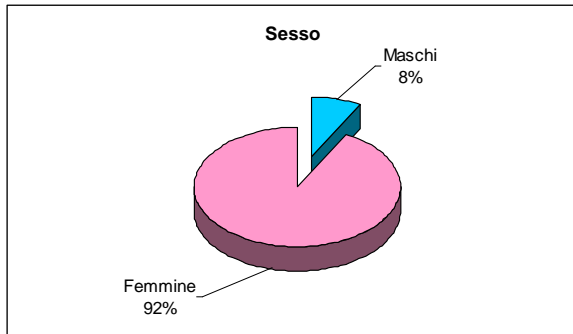
ERITROPOIETINE



FARMACI ANTIDIABETICI

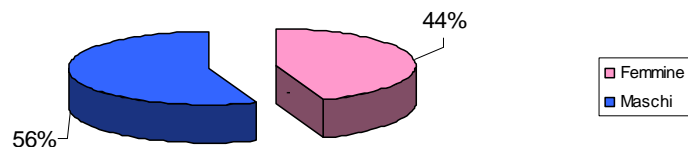


FARMACI PER IL TRATTAMENTO DELL'INFERTILITA' MASCHILE E FEMMINILE

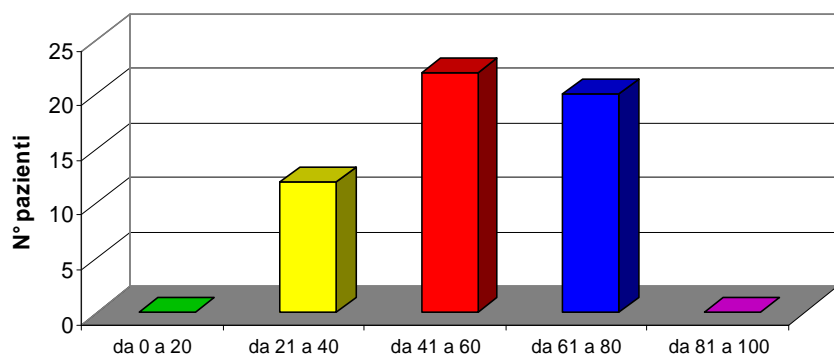


INTERFERONI

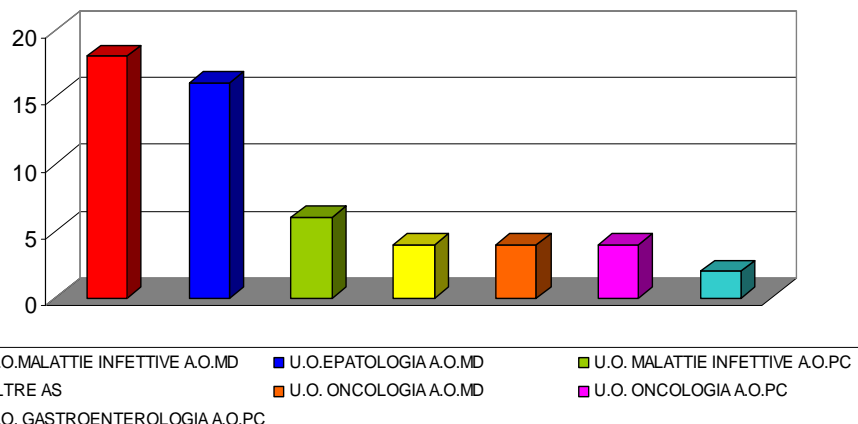
SUDDIVISIONE DEI PAZIENTI PER SESSO



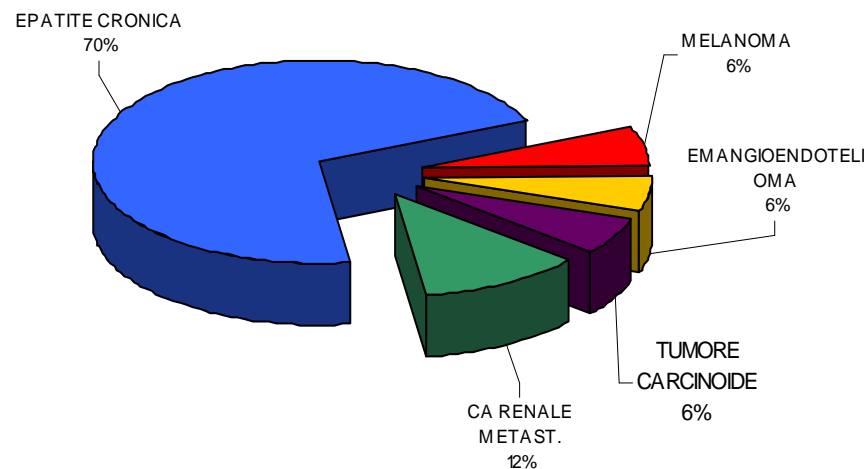
SUDDIVISIONE DEI PAZIENTI IN BASE ALL' ETÀ



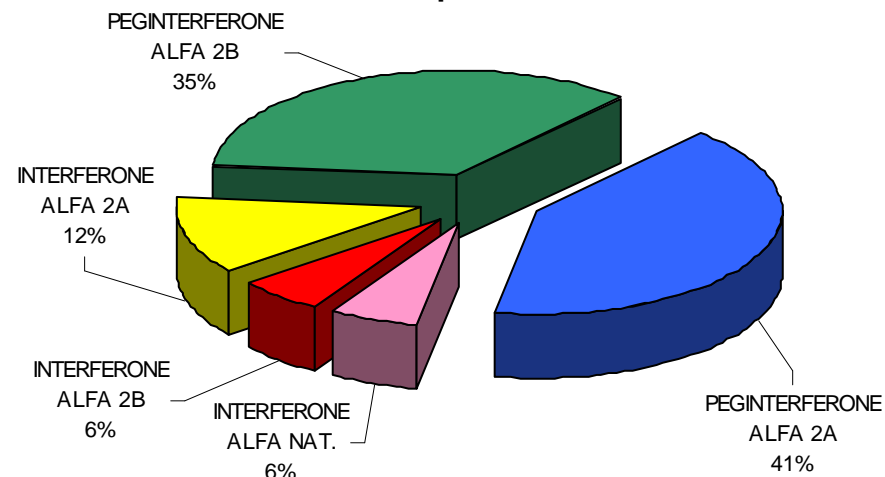
SUDDIVISIONE DELLE SCHEDE IN BASE AL CENTRO PRESCRITTORE



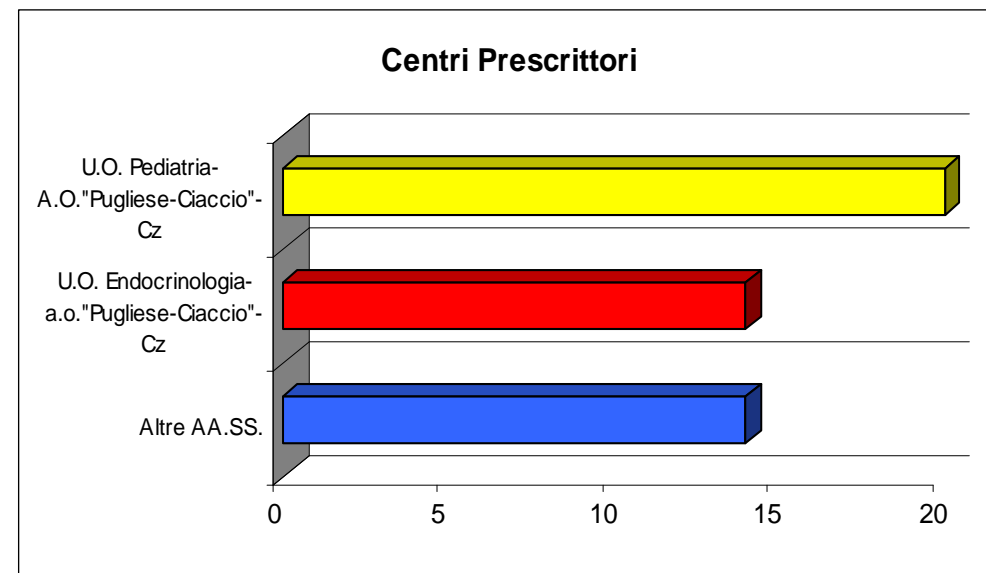
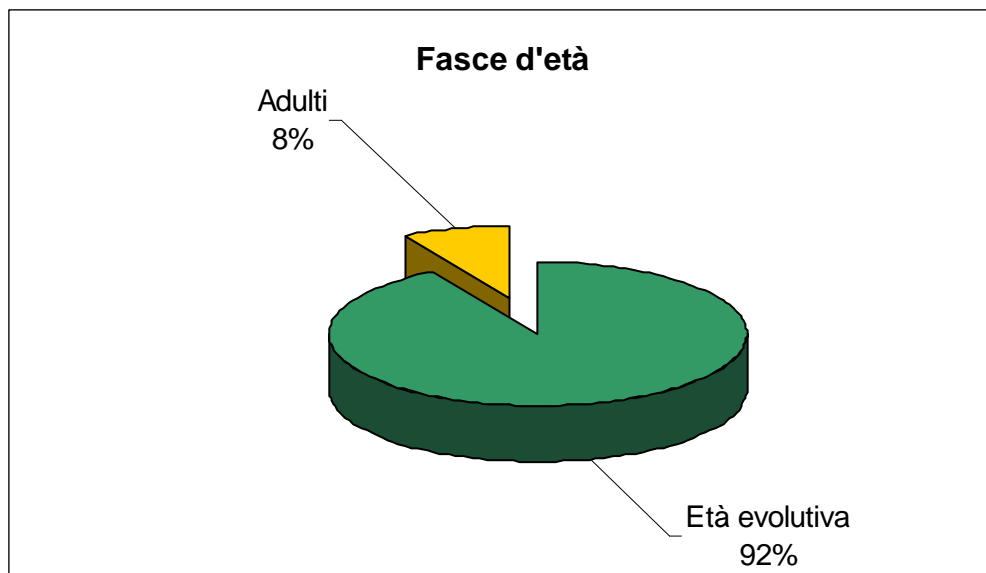
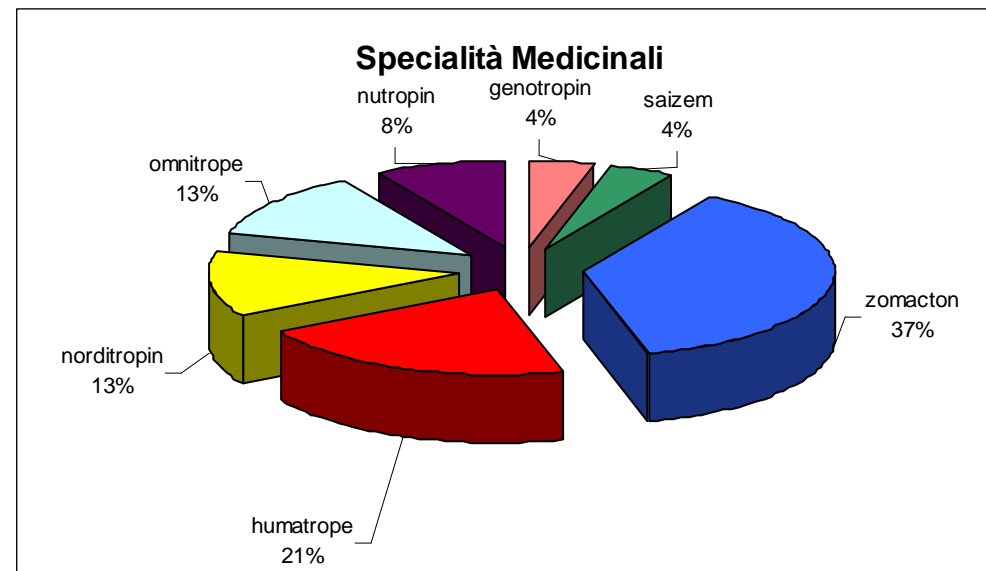
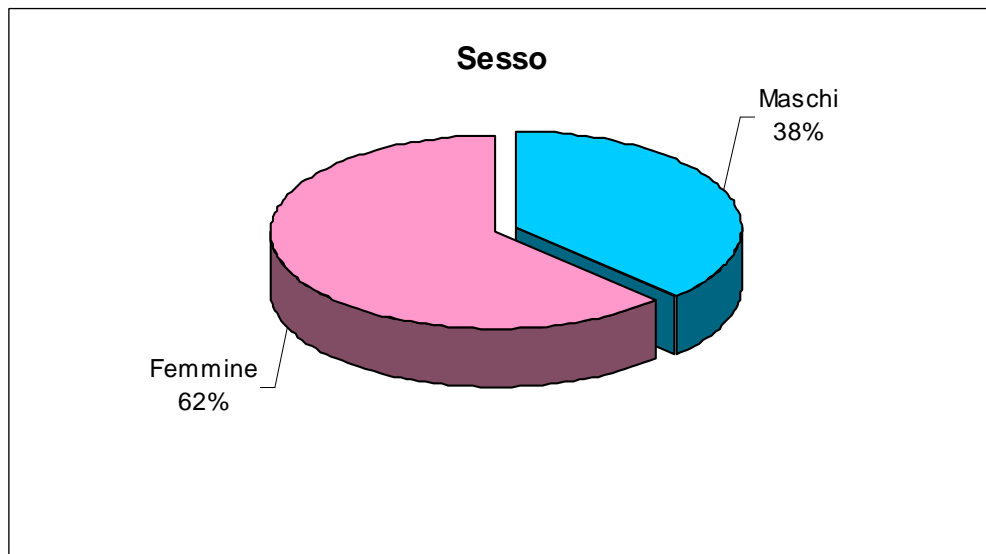
Diagnosi



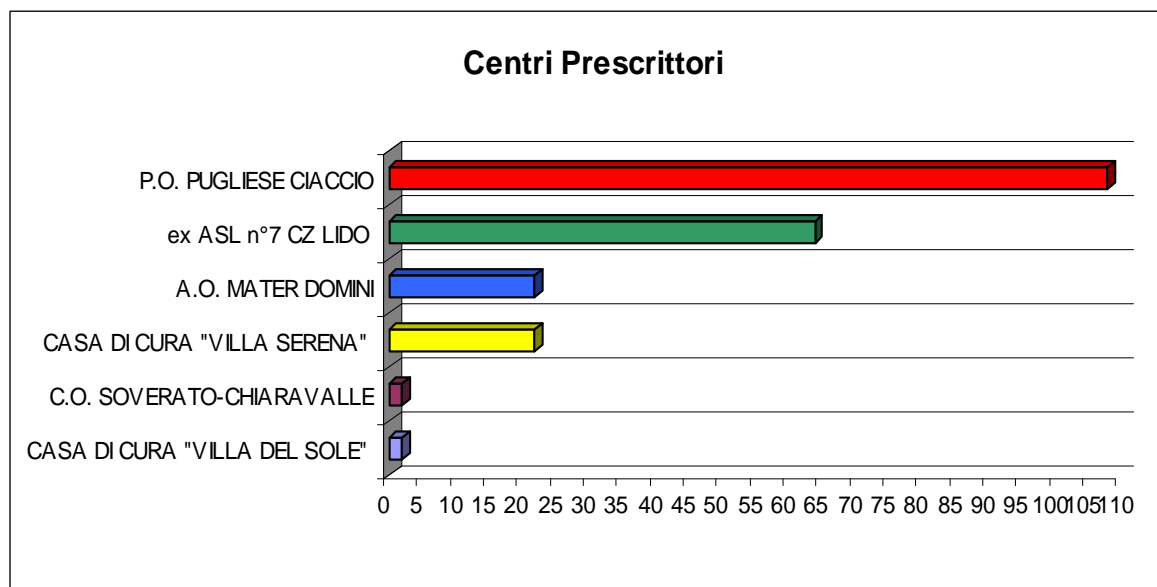
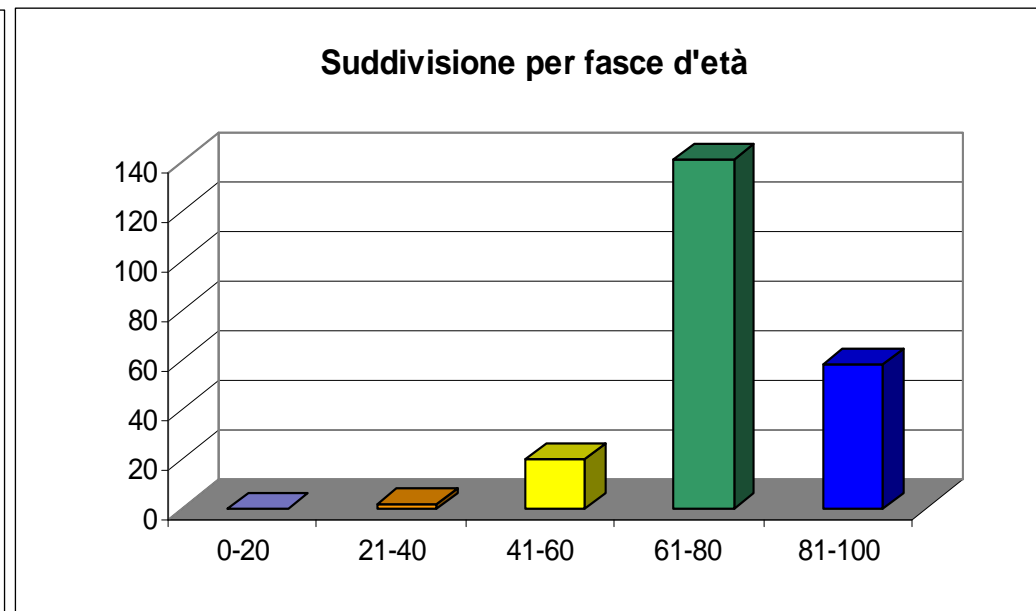
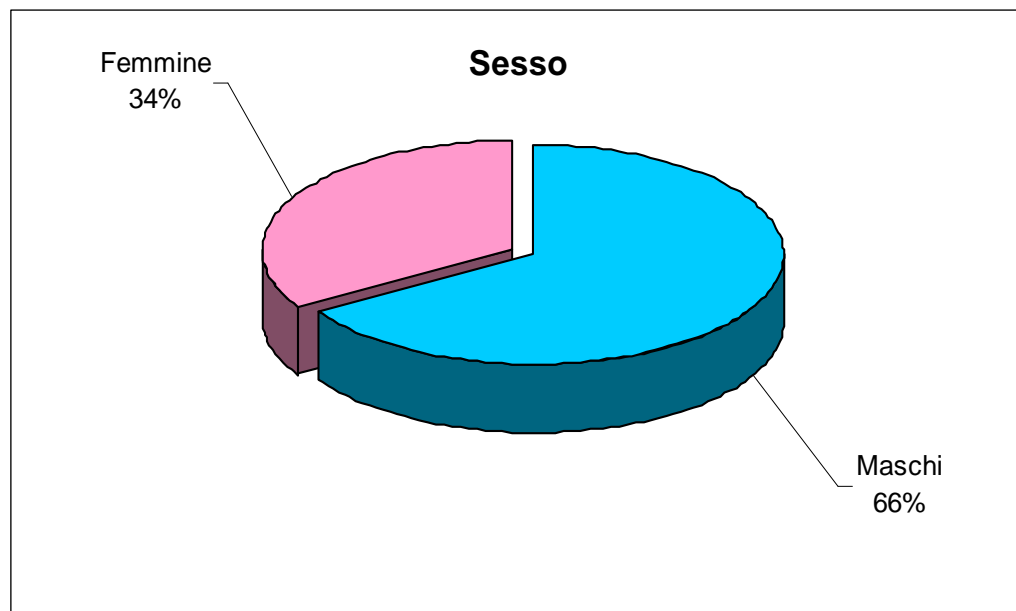
Principi Attivi



ORMONE SOMATOTROPO

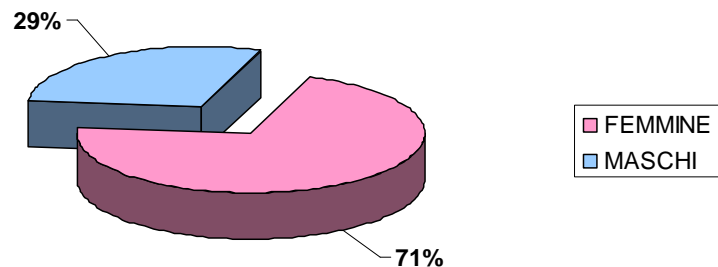


OSSIGENO LIQUIDO

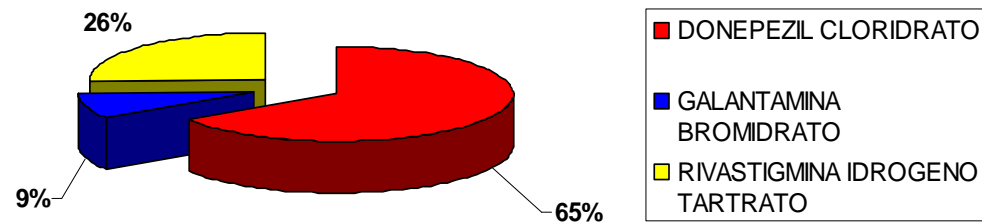


FARMACI PER L'ALZHEIMER

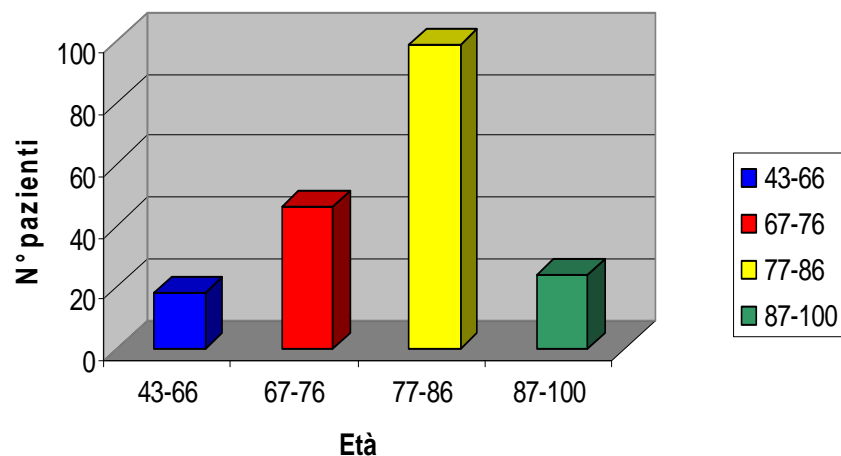
SUDDIVISIONE DEI PAZIENTI PER SESSO



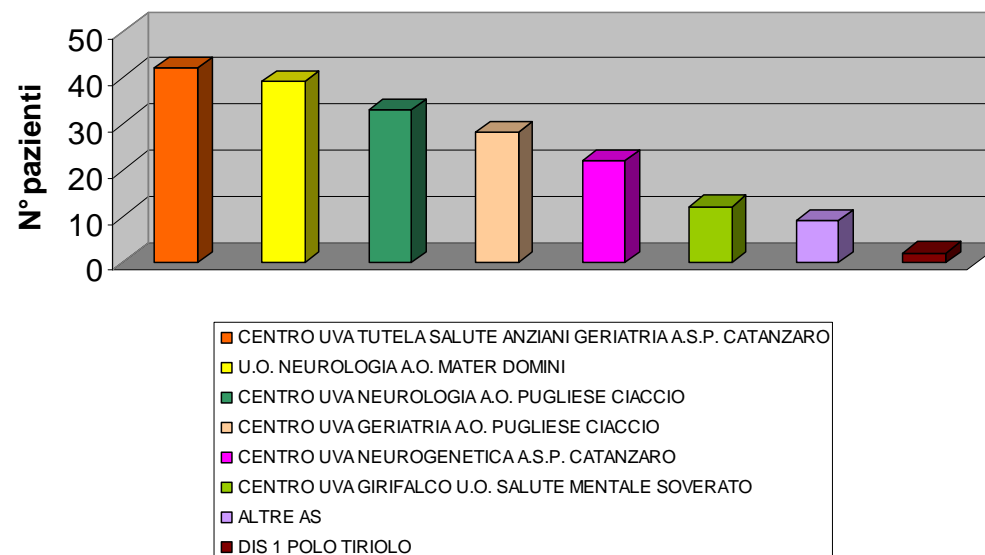
PRINCIPIO ATTIVO



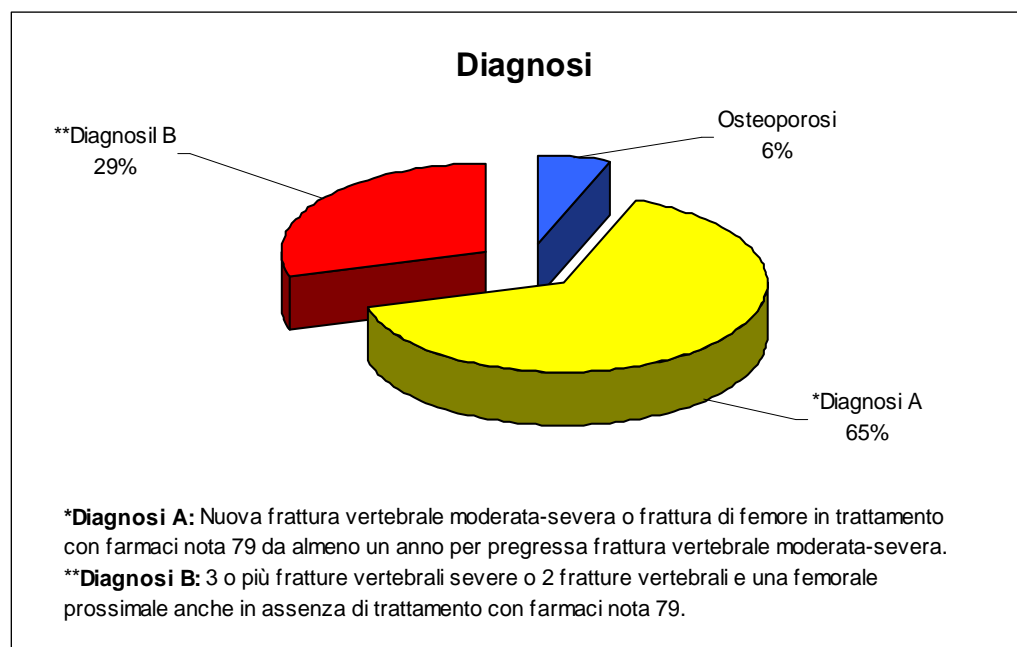
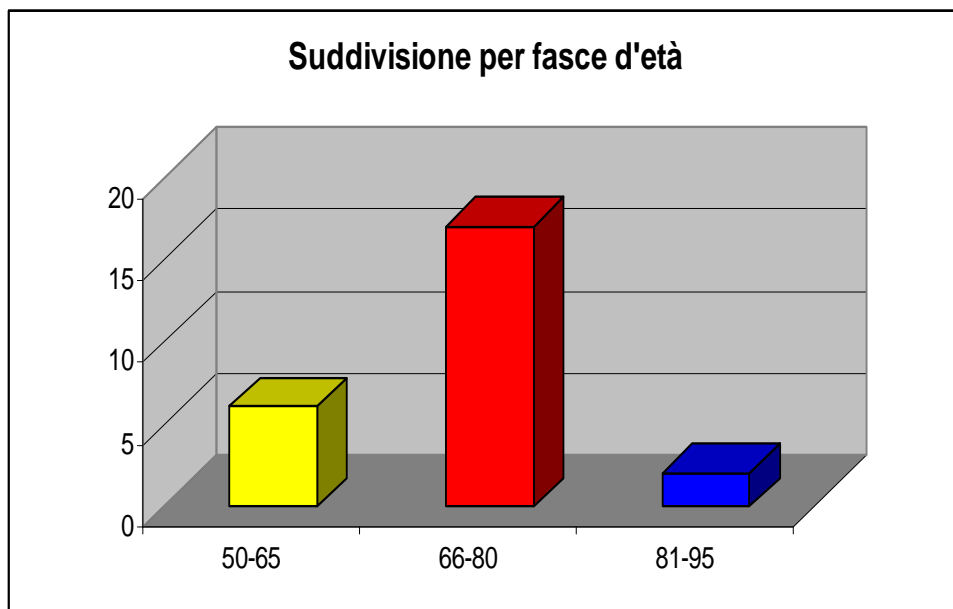
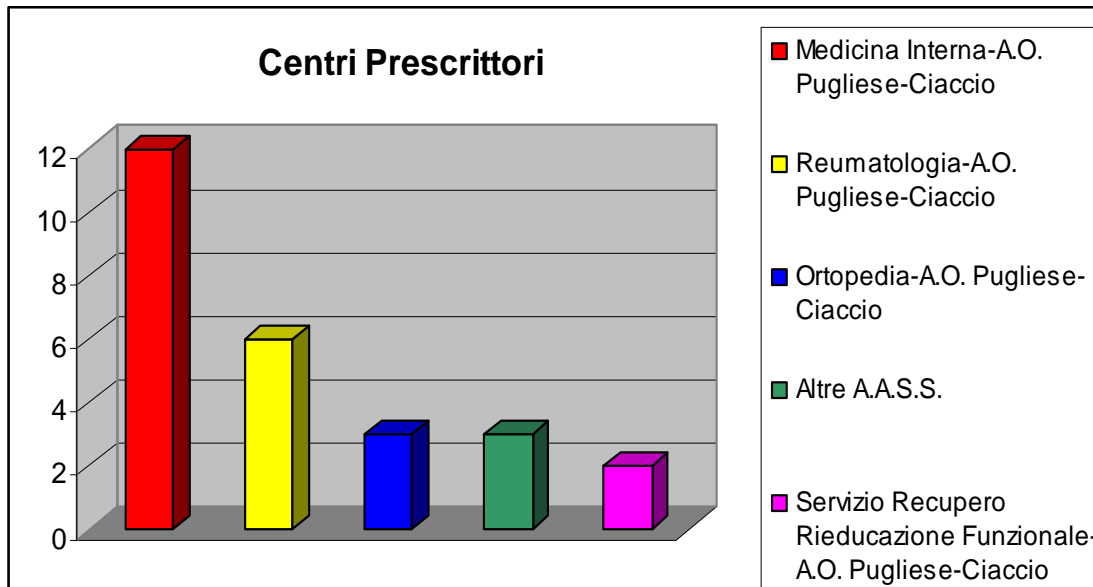
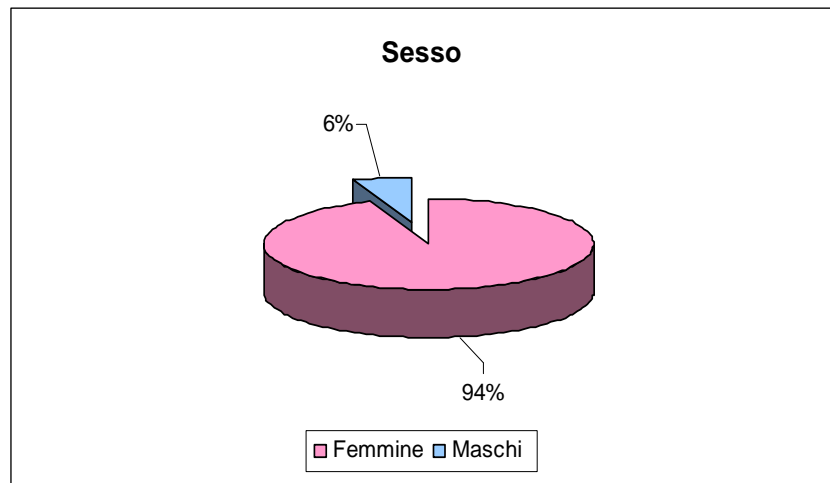
SUDDIVISIONE DEI PAZIENTI PER FASCE D'ETA'



CENTRI PRESCRITTORI

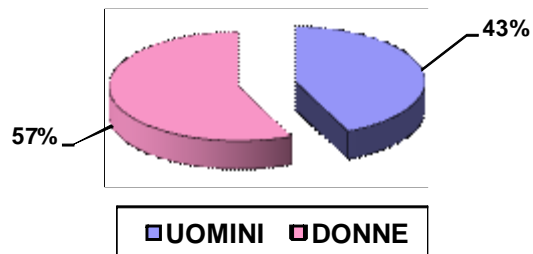


TERIPARATIDE

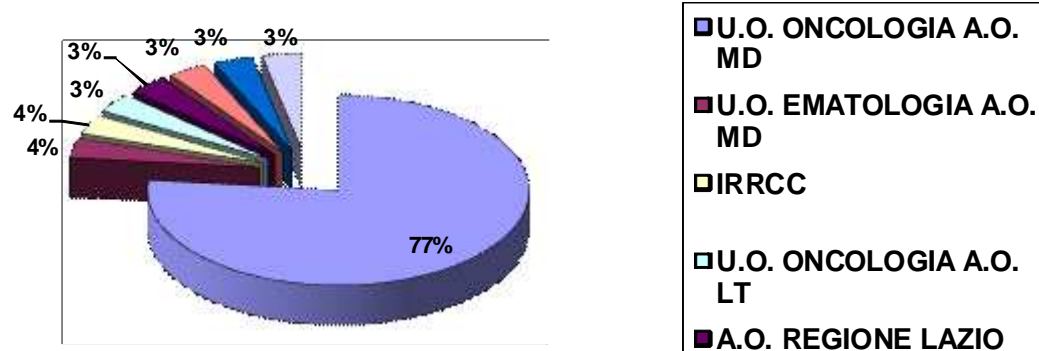


FATTORI DI CRESCITA DEI LEUCOCITI

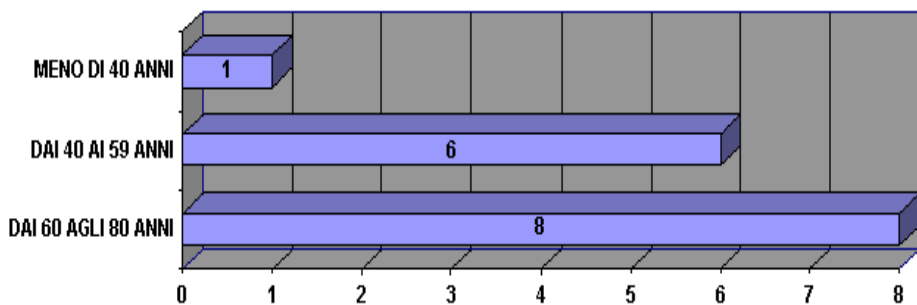
SUDDIVISIONE DEI PAZIENTI PER SESSO



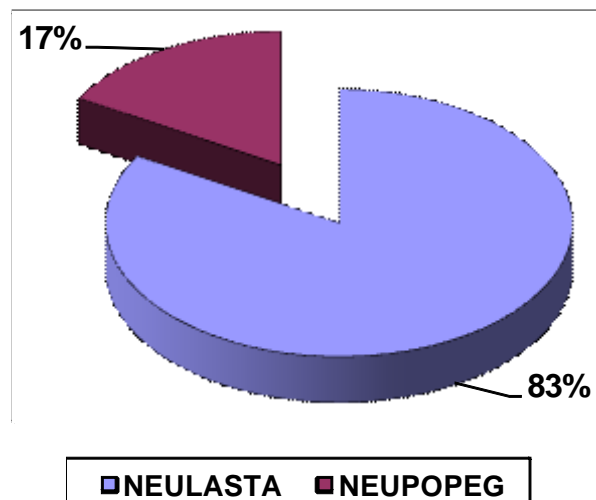
CENTRI PRESCRITTORI



SUDDIVISIONE DEI PAZIENTI IN BASE ALL'ETA'



SPECIALITA' MEDICINALI PRESCRITTE



FARMACI ANTIGLAUCOMA

